

# AERO LAP<sup>®</sup>

Only One Precision Polishing Technology

**15<sup>th</sup>**  
*Anniversary*



The "Only One" precision polishing technology. Smart, speedy and elegant lap

## The "Only One" Features of AERO LAP

### POINT

## Moist polishing material Multi-Cone!!

#### Abrasive diamond grains

#3,000 (2.0 to 4.0 μm), No. 20,000 (0.1 to 0.25μm) etc.



Combines with multi-liquid (solution)

#### Multi cone

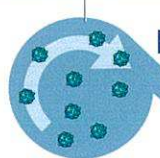
Media with elasticity containing moisture



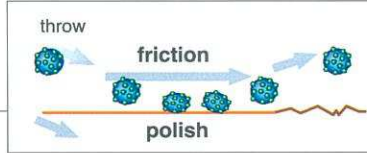
Standard 0.1 to 2.0 mm  
Micro 0.1 to 0.5 mm  
(particle shown enlarged)

Special Silicone core

Throw by centrifugal force



Multi Cone



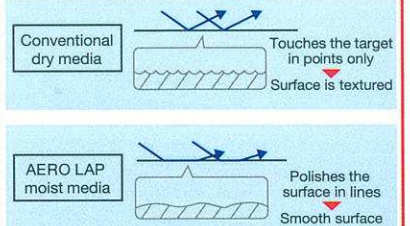
Target

Lapping by friction

Patent No. 3376334

#### Mechanism

The moisture media can make mirror surface. Because the media including diamond which has elasticity and viscosity run on surface in high speed.



### POINT

## Super mirror surface, crisp finish curved and uneven surface!!



- Easily released from die
- Small burrs removed
- Precise curves and improved cutting surface

### POINT

## Recyclable and reusable polishing media!!



## Machine Line-up

Select machine according to the shape of your target or type of polishing

Patent No. 3927812



#### Type

### YT-100

Machine size	Width (mm)	470
	Depth (mm)	780
	Height (mm)	1300
	Weight (kg)	95
Size inside cabin	Width (mm)	280
	Depth (mm)	130
	Height (mm)	180
Rated electricity	Voltage	100V
	Air pressure	Air pressure 0.5MPa



# LAP<sup>®</sup>

ping. [for irregular shaped dies, machine cutting tools, coatings, resin, etc.]

**POINT**

**No need of dust collection, improved operability, incredibly smooth mirror finish!!**

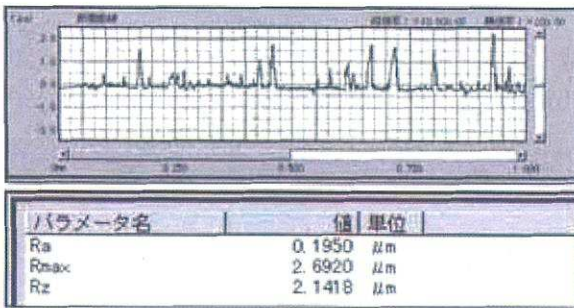
No size change size and sharpness even with irregular, complex shaped dies/ excellent shine/ less work process (saves time)

**AERO LAP effect on coated surface**

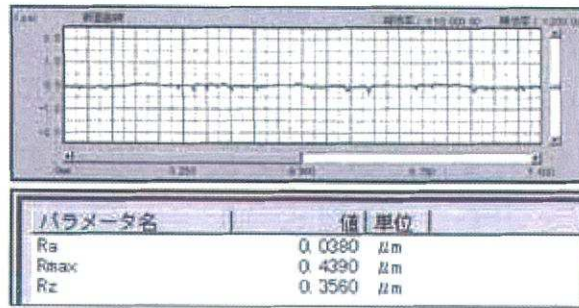
**Improve surface roughness by eliminating droplets**

▼Processed for 30 seconds with AERO LAP YT-300

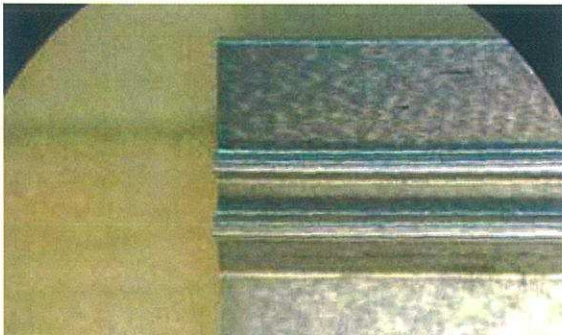
Surface roughness after coating (TiN) Ra0.195μm



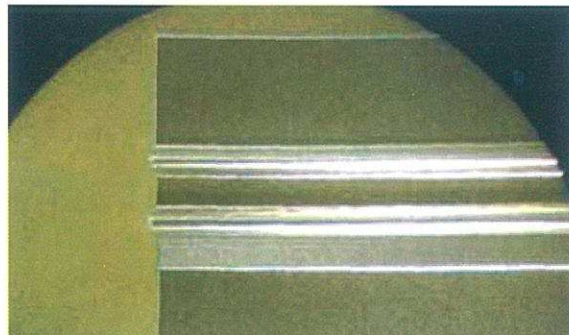
Roughness becomes 1/5 to Ra0.038μm; improved sliding and releasing properties (Process time: 30 s)



**AEROLAP effect on Cemented carbide die**



After PG processing Ry1μm zoom x20



AEROLAP #3,000 3 min. Ry0.3μm zoom x20

**Type**

**YT-300**

Machine size	Width (mm)	630
	Depth (mm)	1000
	Height (mm)	1600
	Weight (kg)	180
Size inside cabin	Width (mm)	450
	Depth (mm)	300
	Height (mm)	240
Rated electricity	Voltage	200V three-phase
	Air pressure	Air pressure 0.5MPa



**Type**

**YT-300H**

Machine size	Width (mm)	650
	Depth (mm)	1090
	Height (mm)	1600
	Weight (kg)	210
Size inside cabin	Width (mm)	500
	Depth (mm)	400
	Height (mm)	240
Rated electricity	Voltage	200V three-phase
	Air pressure	Air pressure 0.5MPa

